

CENTURY FARMS NEIGHBORHOOD ASSOCIATION
PRESENTS

OUR NEIGHBORHOOD NEWS

SUMMER 2004

CENTURY FARMS

PRESIDENT

Ian Carrus

VICE PRESIDENT

Fran Bixler

TREASURER

Mitch Friedman

DIRECTOR

Dale Simonson

SECRETARY

Twila Hughes

**NEWSLETTER
COORDINATOR**

Fran Bixler

**COMMITTEE BOARD
LIAISON CHAIRPERSON**

ARCHITECTURAL

Dale Simonson Need a Chairperson

COMMUNICATIONS

Fran Bixler
Need a Chairperson

COMMUNITY VOLUNTEER

Twila Hughes Need a Chairperson

FINANCIAL PLANNING COMMITTEE

Ian Carrus Need a Chairperson

NEWSLETTER COMMITTEE

Fran Bixler Need a Chairperson

NEIGHBORHOOD WATCH

Fran Bixler Need a Chairperson

POND AND WILDFLOWER AREA

Twila Hughes & Diane Barbret

RULES AND REGULATIONS

Ian Carrus Need a Chairperson

SAFETY AND TRAFFIC

Mitch Friedman & Rob Koss

SOCIAL/WELCOMING COMMITTEE

Twila Hughes Need a Chairperson

The above committees all need volunteers and most need a chairperson. Participation is key in making Century Farms an even better community in which to live.

INSIDE THIS ISSUE

CFNA Meetings & Events	2
Helping Hand	3
Classifieds	3
Health & Finance	4
Landscaping	5
Neighborhood Watch	6
Pet Regulations	7
Naperville Events	8
National Night Out	10

GREETINGS CENTURY FARM NEIGHBORS

2004 has seen a lot of progress made within Century Farms. There are several different items I would like to touch on in this letter.

- Century Farms Park - What a wonderful addition to our neighborhood. It seems that the children in the neighborhood are really enjoying the park. The gazebo is great for the adults also. I think the Naperville Park District did an outstanding job in the development, communication, and installation of the park.
- Neighborhood Watch - This program, which has been stalled until recently, seems to be progressing very well. A large number of our residents have stepped forward to participate as block captains for this project. Neighborhood Watch provides another layer of protection for our neighborhood in that our own residents monitor activity in the area. Any suspicious or criminal activity is reported to the police for their swift intervention. While we all hope it is never needed, isn't it nice to know that your neighbors will be watching out for your property...and you for theirs?
- National Night Out - August 3rd will be the CFNA Night Out. This event promotes safety and partnership with the police to help keep our streets and children safe. It also will be a lot of fun.
- Landscaping and Trash Guidelines - Included in this newsletter are landscaping and trash guidelines. These have been developed by your neighbors and your board of directors in an effort to help beautify our subdivision and keep it aesthetically pleasing. The end result will be higher demand for our homes when they are for sale and higher sales prices. At this point, these are just guidelines that we strongly request our homeowners to follow. At some point, some or all of the guidelines may be adopted as rules.

There are many dedicated people who live in our subdivision who give their time to make the Century Farms neighborhood a wonderful place to live. The events like the Spring Egg Hunt, 4th of July Bike Parade, and others are organized and run by your neighbors. Check the website periodically to see what events are coming up... www.centuryfarms.org and feel free to contact the board if you have any questions or comments.

**Ian Carrus
CFNA President**

CENTURY FARM PARK OPENS

SPRING COMMUNITY CLEAN-UP

EASTER EGG HUNT

4TH OF JULY

Garage Sale Sign Up Form - Aug 7-8
Century Farms Phone Directory Form
CF Newsletter Advertising Form
Helping Hand Application
Information on the -
Pace Car Program Information
CFNA Documents -
CFNA Declarations and By-Laws
CFNA Rules and Regulations CFNA
2004 Budget
Explanation of Committees
Witness Statement Alleging Violation

**CENTURY FARMS
CONTACT INFORMATION**

E-mail the board at:
cfna-board@yahoo.com

Website:
www.centuryfarms.org

Check out our website for
printable forms and information:
Registration Forms -
Natl. Night Out Reg. Form - Aug 3

Century Farms - Our Neighborhood News Summer 2004

CITY OF NAPERVILLE ELECTED CITY OFFICIALS

400 S. Eagle Street - PO Box 3020 - Naperville, IL - 60566-7020
Council's Aide 548-2983 - council@naperville.il.us - Fax 305-5359

Mayor A. George Pradel	420-6018
Council member Mary Ellingson	305-5333
Council member David R. Fiore	305-5331
Council member Richard R. Furstenau	961-1681
Council member Douglas P. Krause	961-2713

Council member Samuel T. Macrane	961-9227
Council member John H. Rosanova	305-5335
Council member Darlene Senger	305-5362
Council member Jim Boyajian	305-5336

CENTURY FARMS NEIGHBORHOOD DIRECTORY

ATTENTION HOMEOWNERS: If you have not yet been contacted by your Neighborhood Watch Block Captain please take the time to complete your information form by August 30th and fax it to: Fran Bixler, Neighborhood Watch/Directory Chairperson at 630-357-3648 or mail it to her at 1608 Mohler Court. Forms are available on line at www.centuryfarms.org. Please remember your signatures or only general information will be listed. General information will be limited to name of homeowners, address and home phone number if obtained. Each homeowner will be mailed a directory upon completion. Note: Children's names will only be added upon the authorization from the parent.

Example of Directory Information Listed:

Resident, Tom and Terri 355-1234
1234 Main Street
tomresident@yahoo.com
terriresident@yahoo.com
Trevor (1989) - Snowplows, Mows Lawn
Theresa (1990) - Babysits, Walks Dogs, Feeds Fish

BOARD MEETINGS

Board Meetings are scheduled to be held quarterly and fall on the second Tuesday night of the following months: March, June, September and December. Meeting notices will inform you of the time and location.



The minutes will be posted on the website following the proper procedures for approving the minutes.

For any questions or concerns in regards to assessments or services, please don't hesitate to contact our property management company:

Lieberman Management Services, Inc.
355 W. Dundee Road Suite 110
Buffalo Grove, IL 60089
847-459-0000 - Direct 847-459-3003 - Fax
Customer Service: service@lmsnet.com
Website: www.liebermanmanagement.com

ANNUAL/MONTHLY EVENTS IN THE MAKING:

Looking into the future, we see a variety of annual events for our homeowners, some of which you might have already experienced this year such as the Spring Egg Hunt and the Fourth of July Bike Parade. We are encouraging everyone to show up to our National Night Out Event and Ice Cream Social on August 3rd.

Some other ideas that are on the back burner and may require your help in organizing are:

Dinner Club This club will require a volunteer rotational host/hostess. Dinner guests will be invited for a theme dinner and will be required to bring along a dish and recipe to share. These dinner clubs can be created for couples and or as a women's club. This would be a monthly club with the meeting dates to be considered by the actual club members. Starts when we get a chairperson to contribute to the organization of this event.



Home Business Expo All home business owners are invited to set up shop to discuss the opportunities for others to join in their home business or to show their product. All of Century Farms homeowners will be invited to see and hear about the opportunities. We have a variety of home businesses that you might not even know about, Cin-Sational Scents, Bath & Body, A Time to Celebrate, Arbonne International, and Oreneda International ... Sometime in September We are looking for a chairperson and volunteers to contribute to the organization of this event.

One Stop Holiday Shopping Vendors from both our home based businesses and outside vendors will bring their stores to our doors! This event will sure to be a crowd pleaser as you can do your holiday shopping right in your own subdivision. Sometime in November We are looking for a chairperson and volunteers to contribute to the organization of this event.

Snow Sculpting Event This would take place in the Century Farms Park and would allow children (with their parents help) create snow forts and snow people. Snow sculptors will be supplied with hot chocolate and photos will be taken and placed on the website and in the next newsletter. Sometime in December or January.



We are looking for chairpersons and volunteers to contribute to the organization of the above events. For information on any of these programs or events. Please email Fran Bixler at fran@prime-realty.net or call her at 357-5642 for more information.

BUNKO ANYONE?

Do you want to join a ladies Bunko group? Bunko is typically the third Thursday of the month but sometimes that changes. It starts at 7:00 pm and the location is on a volunteer rotation basis. Contact Linda Kolnicki at 355-6890 or email her at lkolnicki@comcast.net.



JOIN THE CENTURY FARMS CHAT LIST!

- ☞ Do you want to know what is happening in Century Farms?
- ☞ Do you want to start a new play group?
- ☞ Do you need a referral for a painter, plumber or piano teacher?

Join the Century Farms Chat List! Century Farms is a very exciting neighborhood with many involved families. The CF chat list is opened to every homeowner in Century Farms. It is a private group hosted by Yahoo Groups. The original board, was insightful to set up this e-mail chat group to encourage communication and seek out resources and referrals.



It is an open forum for community discussions - everyone can send emails to the entire community (we currently have over 200 registered users). There is also an email list for "announcements only" for those of you who prefer to receive only the official announcements from the CFNA Board without all the neighborhood chat (no one but the Board or designated representatives can post messages).

Century Farms - Our Neighborhood News Summer 2004

To participate in either list, just send an email to Bob Irvine at irvine@mbhb.com with your name and address, and specify which list you would like to join. Or go to <http://groups.yahoo.com> and sign up for a Yahoo! user ID. Then go to <http://groups.yahoo.com/group/cfna> and request to join the cfna e-mail list (or go to cfna-news, for the announcement list). Please take advantage of this wonderful service. We look forward to chatting with you on-line as well as in the neighborhood!

CENTURY FARMS ANNUAL GARAGE SALE

Friday August 7th Saturday August 8th
9:00 am to 3:30 pm

CFNA would like to make this an annual event. We are currently looking for a Chairperson to head this event. For the time being the liaison for this event will be Fran Bixler.



For those of you who have participated in the first sale (in 2001) may you experience good luck again and have fun. For new participants here are a few guidelines that should be helpful:

- Signs will be placed on Mill Street and Commons, Diehl and West Street, Bauer and Bob-O-link as well as the entry points into the subdivision, on West at Conestoga and Commons and at Bob-O-Link and Erb Farm and at Commons and William Penn.
- Make sure you have plenty of change and singles available.
- Have carry bags on hand.
- Keep small valuable and fragile items near you at all times.
- Don't allow strangers to enter you home to use the restroom or try on clothes.

Don't forget the Great American Yard Sale will be accepting dropped off donations at: 1708 West Jefferson from 9:00 am to 5:00 pm on August 13, 14, & 15. Or if you want your unsold items picked up for donation suggested local organizations include: Salvation Army-888-574-2587, AmVets-708-388-2800, Cancer Federation-800-962-3260, Goodwill-357-6258

COST TO PARTICIPATE:\$10.00

GARAGE SALE SIGN UP FORM CAN BE DOWNLOADED AT:
WWW.CENTURYFARMS.ORG

To participate in the garage sale, please complete the form by July 29th, and return this portion with your \$10.00 fee to: Fran Bixler at 1608 Mohler Ct. Place registration and fee in the garage sale box, located just under the mailbox. Do not place in the mailbox. Thank You. (We need at least four homeowners to participate or the garage sale will be cancelled.)

JOIN THE HELPING HAND PROGRAM

We Need Your Help!

The Naperville Police Department and the Naperville Junior Woman's club are reaching out to our community and asking us to join them in creating an even safer neighborhood for our children. All we have to do is display a "Helping Hand" sign in our front windows year round.



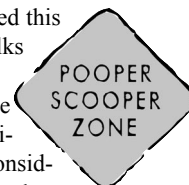
Our children have been taught in school that the sign with the white hand on the red background is a safe place to go when they need emergency help. The more signs in the neighborhood means a better chance for a child to find someone home anytime of the day. When a child comes to your door in an emergency situation, such as becoming lost, frightened, injured or ill, just call "911", the Police Department will handle the rest.

Numerous "Helping Hand" signs in windows also discourages crime in a neighborhood since everyone is watching out for each other. Having several volunteers on a block also gives parents a better sense of security knowing their children can depend on their neighbors.

All of our children need help occasionally. Right now, our neighborhoods have very few volunteers. Please volunteer (to help a child in urgent situations) by filling out the attached application. Current "Helping Hand" volunteers must renew their application at this time. For further information, please contact Marcia Schild at the Naperville Police Department 420-6667 or Bev Healy 416-7634.

PET OWNERS WANTED

To keep your pets appropriately leashed or controlled this summer. As nice weather is finally here, family walks often include the family pet(s). Please accept this neighborly reminder to become more aware of those who may be frightened of pets, especially larger animals, when walking the neighborhood. Please be considerate and take care that your pet does not wander freely, either during your walks or just off your property.



Take care to clean up any mess your pet may leave behind as well. Summer time is a busy time for all families and especially for those families that choose not to have pets, it is unwarranted if they need to clean up a mess on their own property made by someone's pet. Thank you for being considerate and thoughtful.

CENTURY FARM'S SUMMER ACTIVITIES?

A great way to meet other moms and kids in the neighborhood this summer! Meets Mondays at 10:30 am throughout the summer, activities are below:

- July 12th is Water Park across from Blackberry Farm
- July 19th is Kiddie Land
- July 26th is Centennial Beach
- August 2nd is Santa's Village
- August 9th is Cosley's Zoo
- August 16th is Brookfield Zoo or Ty Park (pending weather)

For further information, contact Susan Swanson at 718-9822.



AVAILABLE FOR RENT:

One Week in a luxury one bedroom, two bath condo (sleeps 4) in Cancun, Puerto Vallarta or Los Cabos. Club Regina with Raintree Resorts are considered



5 star resorts and are right on the beach. Each resort offers the finest customer service available with restaurants and activities on site. Asking price is \$1,000 for a full week (7 nights). Contact Fran Bixler at 630-357-5642 or fran@prime-realty.net.

AVAILABLE FOR RENT: One week in a

luxury two bedroom, 2 bath (sleeps 6) at Scottsdale Camelback Resort in November. This resort offers the best of amenities plus location.

Scottsdale Camelback Resort backs to the Phoenician Golf Club and Camelback Mountain and is just a few blocks from the famous Scottsdale Fashion Square Mall.

Asking price for this is \$1,400 for a full week (7 nights). Contact Fran Bixler at 630-357-5642 or at fran@prime-realty.net



Would you like to post something for sale or available for rent? Email the board with you classified ad at cfna-board@yahoo.com to get it in the next newsletter!

DONATIONS NEEDED!

♥ Naperville's very own Loaves and Fishes Food Pantry is trying a new summer program. Joanne Mitrenga, the director of Loaves and Fishes Food Pantry, heard about free summer lunch programs initiated in other cities. Joanne decided to make the program into a reality for our own Naperville families. "We estimate we would be putting about 400 kids into the program," Mitrenga said.

Providing such a program will cost about \$5,000. Although our donations could help substantially if we donate the food indicated below:

What is needed: Fruit Cups, Pudding Cups, Milk and Cereal Bars, Peanut Butter, Jelly and calcium rich bread.

Donations can be made from 9 am to noon on Mondays, Tuesday, Thursdays and Fridays or from noon to 2:00 pm on Sundays.

Loaves & Fishes Food Pantry 556 W. Fifth Avenue Naperville IL 60563 630-355-3663.

♥ Shoes and socks are being collected for donation to Romania's disadvantaged in conjunction with WMBI. In 2004 Moody Radio will promote a Shoes for Orphan Souls Shoe Campaign by collecting new shoes and socks for orphan children in Romania and Latvia. In The Mood is an official drop off site for the radio station's campaign. In The Mood Women's Fitness Center is located in North Aurora, right on Butterfield Road at: 736 Butterfield Road. Call 859-9700 to find out more about the Shoes for Souls Campaign.

In The Mood Women's Fitness 736 Butterfield Road, North Aurora IL 60542 630-859-9700 www.inthemoodwomensfitness.net

♥ Sharing Connections is located in Downers Grove and finds loving places for gently used items. Sharing Connections is always in need of the following "gently used" items; cribs, toddler bed, travel cribs, stroller, high chairs, car seats, swings, changing tables, beds, dressers, bed linens, washers/gas dryers, microwave ovens, stove/refrigerators, kitchen appliances, plates, bowls, cups, silverware, glass ware, cooking utensils, pots and pans, couches, loveseats, chairs, lamps, end tables, coffee tables, kitchen tables/chairs, vacuum cleaners, night stands, tv's/vcr's/dvd's, clothing (in season), purses, shoes belts, holiday decorations (in season). Sharing connections donation guideline is simple, please respect the dignity of our clients and only donate items that are in very good, usable condition. To find out more information, please call Sharing Connections at 630-971-0565.

Sharing Connections 5111 Chase Avenue Downers Grove IL 60515 630-971-0565

HEALTH WATCH CORNER:

Weight Training and Fat Burning:

Incorporating weight training into your regular exercise program can help burn unwanted fat pounds for two reasons. One reason is the muscle fiber and the second reason is an increase in your metabolic rate. Weight training, or as some refer to as strength training, should be performed at least 3 times per week. Although a personal trainer can help prescribe the best program for you, as a rule it is recommended that a minimum of one set per exercise for each major muscle group be performed. The major muscle groups are quadriceps, hamstrings, low back, upper back, abdominals, chest, biceps triceps, shoulders and neck. Each exercise should consist of 8 - 12 repetitions, done in a slow, controlled manner. The resistance should fatigue the muscle group by the end of the set.

Muscle fiber is the basic element of the muscle. These are the three types of muscle fiber: slow twitch (slow oxidating (SO) or Type I: fast twitch (fast oxidative - glycolyme (FOG) or Type IIA: and pure fast twitch (FT or Type IIB). Slow twitch fibers get most of their energy from fat burning, a process that require oxygen. This is also fueled by

the fibers' ample supply of blood vessels, glycogen, mitochondria (cellular furnaces where fat and nutrients are burned), and the blood fats inside of various related cells.

Pure fast twitch fibers are different in that they contract rapidly and fatigue easier. These fibers get their energy form burning glycogen. There are fewer mitochondria in the cells that makeup fast twitch fiber; therefore, these fibers burn less fat than slow twitch fibers.

The fast twitch fibers also contract quickly, bust sustain more endurance. This may be because they have more mitochondria than the pure fast twitch but less than the slow twitch fiber. The most interesting benefit of high intensity weight training (or long duration aerobics) is that pure fast twitch fibers take on the behavior of regular fast twitch oxidative fibers. This type of high intensity weight training activity increases the amount of mitochondria in the fast twitch fibers to levels higher than those found in the slow twitch fibers. With more mitochondria present in the muscle cells, more fat is burned.

Metabolism and the rate at which it functions represents the amount of energy you need on a daily basis to sustain your life. Even when resting or sleeping, muscle tissue is very active and requires up to 45 calories per pound per day. Consequently, losing muscle (muscle atrophy) results in a reduction of your metabolic rate. With less muscle, your body requires lower energy. Food once used as energy is now store as fat. A sensible, long term and regular weight training program is the best in avoiding a decrease in lean muscle mass and metabolic rate.

Beginning a regular weight-training program can take some effort. No matter what your age, weight training will fuel a lasting lifestyle and add longevity and functionality to your life.

Mary Golda, Certified Personal Trainer Phone: 630-747-5537

In The Mood Women's Fitness Center
736 Butterfield Road North Aurora, IL 60542
www.inthemoodfitness.com

FINANCIAL FACTS

Your Child And A College Education...Five Facts You Need To Know

Fact #1: The "Rich" And The "Poor"

The gap between the rich and poor is growing rapidly across the United States. In 1994, for the first time since such records were kept, the richest 20% of US households received a greater share of national income than the middle three-fifths combined. The bottom 40% was worse off in inflation-adjusted terms in 1993 than similarly situated people two decades earlier. (Source: US Department of Labor)

Fact # 2: College Pays

Earnings of full-time workers who have a college degree continue to accelerate faster than those with just a high school diploma. In 1979, the average college graduate earned 49% more a year on an average than a worker with only a high school diploma. By 1994, the earnings gap had widened to 89%. Each year of formal schooling after high school adds 5% to 15% to annual earnings later in life. (Source: US Department of Labor)

Fact # 3: College Costs

Today, the minimum per year cost for a student attending a 4-year, in-state University is approximately \$10,000 per year. This cost includes in-state tuition, books, room and board. It now takes an average of 5 years to graduate. Only about 40% graduate in 4 years.

Here are the minimum costs of a college education based on five years to graduate and college costs rising at 5% per year.

Now	\$50,000
Future Five Years	\$63,814
Future 10 Years	\$81,445
Future 15 Years	\$103,946

Century Farms - Our Neighborhood News Summer 2004

Fact # 4: You Have Four Choices

1. Pay college costs out of ordinary income.
(Add 25% to 30% to cost for taxes)
2. Kids work to pay part of costs.
(Kids take longer to graduate, higher drop-out rate)
3. Student Loans.
(College graduate starts out adult life deeply in debt)
4. Pay college costs out of assets.
(Buy a rental property that will be free and clear)

Fact # 5: The Easiest Way To Pay For A College Education Is By Buying A Rental Property With A 15 Year Loan.

Here's the equity created in a \$125,000 rental property with a 20% down payment:

Equity Now	\$25,000*	\$25,000**
Equity in Five Years	\$45,557*	\$80,112**
Equity in 10 Years	\$77,003*	\$155,614**
Equity in 15 Years	\$125,000*	\$259,866**

*Assumes no increase in property value

**Assumes 5% per year appreciation.

Bob Brown, Broker Owner 630-922-2400
Prime Residential Mortgage Company, Inc.
184 Shuman Blvd, S-200 Naperville, Illinois 60563
Bob@primeresidentialmortgage.com

LANDSCAPING GUIDELINES UPDATE

In reference to the following Landscaping Guidelines, these guidelines are intended to bring about improvement within our community. It is the Boards desire to increase awareness of a rising challenge within the community that landscaping, or more specifically, the lack of maintenance of such that has become an issue. While the City of Naperville does have regulations regarding this situation, it is the Boards opinion that the City of Naperville's regulations provide for only the most neglected properties.

The City's ordinance refers to weeds and grasses over eight inches high and five inches high in parkways. The City's height restrictions do not suggest that this is an anticipated practice of homeowners. Nor does it mean that lawns should be allowed to grow to such an undesirable height.



"It is illegal to dump yard waste or trash in vacant lots, public streets or landfills. Certain varieties of weeds and grasses over eight inches high (five inches in parkways) are considered health hazards. If a weed or trash problem develops in your neighborhood, the city may be required to correct it at the expense of the property owner. To report these types of violations, call the Code Enforcement at 630-420-6693." Taken from the Code Enforcement section from the City of Naperville. Currently the Century Farms Declarations provision in regards to lot appearance is simply:

Section 5. Lot Appearance. Each Lot shall be properly maintained and landscaped in such a way as to enhance the appearance of the Lot and the surrounding Lots and shall be neat in appearance and in good order. No person shall accumulate on a Lot junked vehicles, litter, refuse or other unsightly materials. Vacant Lots shall not be used for the purpose of gardening and/or raising crops thereon. No fences shall be erected or maintained on any Lot, except for invisible electronic fences for dogs.

Without providing further definition of what "neat in appearance and in good order" means, violations of such nature would than become subjective and without precedent. Would then neat in appearance and in good order than relate back to City ordinances and imply that any property that has weeds and/or grass that are below the height of 8 inches or 5 inches in the parkway is in good order?

It has always been this board's mission to handle issues in a neighborly and highly diplomatic effort. The board has listened to the homeowners and has since created the following guidelines to support the declarations definition of lot appearance.

These guidelines are not rules and hence can be changed to meet the needs of the community in a practical medium. Again, it is this Boards mission to handle this with the highest standards of diplomacy. Please let us know how we can make this work effectively.

Sincerely,
The Board of Directors

The Century Farms Neighborhood Association strives to maintain a clean, well-maintained environment that enhances the overall appearance and valuation of our neighborhood. This requires all neighbors to respect the following guidelines.

LAWNS: The homeowner shall keep their lawn well maintained at all times during the growing season (generally April through October). This includes performing regular mowing, trimming, weeding, fertilizing and watering such that the lawn reflects, in the Board's view, generally accepted community standards. Example standards include:

- Grass not exceeding approximately 4" in height
- Watered sufficiently to keep the lawn green especially in the front (unless severe watering restrictions are invoked by the City of Naperville or at time of severe drought)
- Weeds controlled to promote healthy grass growth, with weeds that are present not exceeding the height of the surrounding grass
- Blight (e.g. from grubs, fungus, etc.) controlled with appropriate steps to correct the problem promptly

LANDSCAPING: The homeowner shall provide adequate landscaping such as flowers, bushes, trees, or other similar plantings such that the property reflects, in the Board's view, generally accepted community standards. For the street-side(s) of the house, this includes installing flower beds or other landscaping such that there is at least a 2-foot landscaped span from the lawn to the side of the house (e.g. no grass touching the side of the house).

LANDSCAPE MAINTENANCE: The homeowners shall keep all gardens and landscape plantings maintained to a reasonable level of presentability, including proper weeding, trimming and removal of dead plants in such a manner as to reflect, in the Board's view, generally accepted community standards.

TRASH/GARBAGE: Homeowners shall keep trash receptacles out of site of the front of the home between trash collection days. Yard waste, including shrub and tree trimmings, shall be stored in the garage, or for no longer than 7 days at the rear of the home.



Homeowners shall place trash containers at the curb no earlier than 5:00pm on the night prior to trash collection day and shall remove the empty containers from street-side by 9:00pm the day of the collection.

LITTER PREVENTION: Trash shall be placed in appropriate collection containers so as to prevent inadvertent littering due to wind or dogs, raccoons or other animals. Recycling items also must be secured to prevent blowing through means such as:

- Placing heavier items on top of the lighter items
(paper bags containing newspaper set on top of plastic)
- Placing an available hard cover on the recycling bin
- Using a "cargo type" net that fits over the recycling bin
- Homeowners shall follow trash guidelines at all times.

Although these are guidelines, our declarations do have a provision for yard appearance to which these guidelines may apply.

PARKWAY TREE CONSERVATION PROGRAM

A part of the board's goal this year is to improve the appearance of our neighborhood by incorporating higher standards of landscaping all around. With that in mind, the board had made some changes to our current landscaping maintenance program this year by adding some new services:

Pro's Landscaping has begun their new service on all the parkway trees. This is a new effort to preserve our parkway trees and establish a tree conservation program. With this program in place, our parkway trees will be attended to by Pro's Landscaping. The higher standards of tree care management will result in a better-manicured neighborhood, with healthier trees and it will look instantly better.

They will mulch with a top of the line mulch that will make the neighborhood uniform in appearance and provide protection to the trees root system during drought.

Pro's will leave any landscaped block or other decorative landscaping pieces around the trees if that is the case.

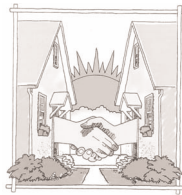
They will also extend the tree ring when needed, especially around those trees that have allowed the grass to grow right up to the trunks of the trees. They will prune away suckers and water sprouts. Pro's will prune any dead or dying branches.

They will identify if any tree is displaying signs of disease or trauma and begin treatment if possible or will let us know if we need to proceed with removal. They will not fertilize the trees in order to prevent double fertilization by both the homeowner and themselves.

This service should be completed by print time. If your tree is obviously missed, please email the board with your address so that we may inform Pro's Landscaping.

NEIGHBORHOOD WATCH

This is going to be the year that we finally complete the Neighborhood Watch Program. In order for us to receive Neighborhood Watch street signs 100% of our homes must show participation by placing their Neighborhood Watch decal by either their front door or front window.



At the next Regular Meeting of the CFNA Board of Directors, Marita Manning of the Naperville Police Department will speak about the importance of a neighborhood watch program and neighborhood safety.

Soon a neighbor will appear at your front door asking you to participate in the program by first applying the decal to the front door. This neighbor will be your volunteer Block Captain. As such, your Block Captain will be obtaining information from you that will then become part of our Phone Tree and our first complete Century Farms Neighborhood Phone Directory.

Since the phone directory and the phone tree are duplicative in nature, we felt this was the opportune time to develop both. The phone tree is a useful system to have in place in case of missing children or a suspicious van or person is spotted in the neighborhood.

The Phone Directory will allow for parents to provide the names of their children as well as odd jobs the children may perform, such as babysitting, lawn mowing or shoveling services. Parents may also elect not to list their children's names. Outside of the children's names, we will be requesting that each homeowner make available their name and phone number for the directory/phone tree.

If you are interested or would like further information please email Fran Bixler at fran@prime-realty.net or call her at 630-357-5642.

Fran Bixler
Neighborhood Watch Chairperson

SUMMER IS HERE AND SO ARE THE "HONEY DO" LISTS

Here are some "preventative maintenance" recommendations to follow. If you are uncomfortable with performing any of the items yourself, consider hiring a professional to help you. For the complete Home Maintenance Checklist, email Fran Bixler with Home Maintenance Checklist in the subject line*.



EXTERIOR CHORES

Open all hose bibs and run water freely for a minute.
Rake all debris away from sides of homes.
Clean area surrounding air conditioner and gently hose debris off the exterior.
Have a heating and air conditioning professional inspect and clean air conditioner.
Check roofing for shingles or flashing which may need repair or replacement especially if you have noted water stains on ceilings (sometimes this is caused by condensation freezing on nails/joist connections in the attic, which then melts creating a water stain, other times it may mean flashing or shingles need repair or replacement.)
Check and clean out gutters and downspouts for repair and caulking.
Check exterior surfaces, especially around window casing for any necessary caulking.
Inspect and repair/replace weather stripping, torn screens, broken windows and broken light fixtures.
Inspect and stain/paint mailboxes, wood trim, door trim.
Check vinyl/cedar siding for any winter damage that might have occurred.
Check brick and mortar for any crumbling (spalling) or damage. Call a professional for repointing and sealing.
Scrub and treat any mildewed areas of home exterior, porches, pillars, decks, children's play sets.
Clean out basement window wells.
Clean out under decks and porches, check for animal infestation.
Clean and check decks, between deck boards and above joists for rot.
Inspect for any cracks in foundation or brick.
Clean debris built up in brick weeping holes.
Clean exterior by hose.
Prune landscaping that touches home, decking or patios. (Check on specific bushes and tree to confirm their pruning season before new growth.)

INTERIOR CHORES

Check for molds forming in attic and basement especially on the north side, first check from lowest point to highest. (Winter moisture in newer homes is often the cause of mold. Most molds are not dangerous; email me for a Mold Brochure.)
Check attic ventilation units for repair/replacement.
Inspect plumbing shut off valves and gas valves.
Vacuum smoke alarms, heating register, vents, ducts, radiators.
Dryer vents-blow vent/duct clean of lint with a landscaping blower/vacuum.
Clean and seal tile grout in bathrooms and kitchens.
Freshly caulk around sinks, bathtubs, showers.
Inspect toilets for stability or leaking.
Inspect fireplace for creosote/soot buildup/clean flues annually.
Inspect and clean shower heads and faucet aerators.
Grind ice cubes in disposer with 1/2 cup baking soda + 1/2 cup vinegar.
Clean under/behind refrigerator, vacuum coils, drain condensation pan.
Clean kitchen exhaust fan filters. Clean grime/grease off of light fixtures and cording above any cooking surfaces or in the kitchen.
Inspect visible interior foundation areas, pipes, vents and ducts.
Have heating and air conditioning professional check furnace.

Century Farms - Our Neighborhood News Summer 2004

Turn off the water valve leading to humidifier.
Drain one bucket of water from hot water heater, check temperature settings.
Replace/clean furnace filters, humidifier, water and/or air cleaner filters.

Fran Bixler, Broker Partner (630) 357-5642
Prime Realty Network, Inc.
184 Shuman Blvd, S-200 Naperville, Illinois 60563
fran@prime-realty.net

PET REGULATIONS

Abuse

Owners are required to properly provide pets with food, water, shelter and veterinary care. It is against the law to abuse or abandon an animal. Naperville has two animal welfare groups that offer care for abandoned, injured or abused animals:

Animals Deserving of Proper Treatment (ADOPT) 630-355-2299
Naperville Humane Society 630-420-8989.

Leash Laws

Dogs and cats must be leashed whenever off the owner's property. Unrestrained animals will be picked up and taken to the city's animal control facility located at 1340 Aurora Ave. If unclaimed within seven days, animals will be put up for adoption or humanely disposed of in accordance with state law.

Licenses

Dogs and cats must wear city animal licenses at all times. Licenses are sold at the Finance and Police departments and must be obtained annually or by the time the animal reaches four months of age. In order to receive a license, you must bring a rabies inoculation certificate from your veterinarian. The cost for an annual pet license is \$8 regularly. The fee is reduced to \$4 for pets which have been spayed or neutered. The license is valid for one calendar year from January 1 through December 31. No more than three dogs and three cats may be licensed to a home.

Lost/Found

For information on lost or found pets or wildlife call the Police Department at 630-420-6666.



Walking

Dog owners walking a dog on private or public property must carry a device for removal of dog excrement. Excrement should be promptly deposited in an appropriate receptacle. Cat owners are required to remove their cat's excrement from the property of any individual who requests it.

LAWN SPRINKLING

General Restrictions

Lawn sprinkling is only permitted during the hours of 6-10 am and 6-10 pm. Property owners with odd-numbered street addresses may use sprinklers on odd-numbered days, and owners with even-numbered addresses may use sprinklers on even-numbered days. For example:

1200 Ogden may water on Aug 6

1201 Ogden may water on Aug 7

These restrictions are in place 365 days a year. Property owners are responsible for setting automatic timers accordingly and/or notifying lawn care services. Residents may use hand held hoses anytime to water trees, shrubs, flowers and vegetable gardens; to fill wading pools up to 50 gallons, and to wash cars. Root feeders for trees are also allowed any time.

Sod and Seed Regulations

The city provides additional sprinkling opportunities for property owners planting new seed or sod in a large area, such as full lots. Small patches should be hand watered. Property owners may use lawn sprin-

klers for eight hours on the day the sod or seed is placed on the lawn. For the next nine days, lawn sprinkling is permitted anytime between the hours of 6-10 a.m. and 6-10 p.m. On the eleventh day, property owners must adhere to the general sprinkling regulations.

Violations and Fines

The city enforces the sprinkling regulations through citations and fines. Each violation is reviewed by the city. If it is determined that a citation is warranted, it will be mailed to the property within 10 working days of the violation. A \$25 fine is levied for the first violation of the sprinkling ordinance - \$35 if not paid within 15 days. For a second violation in the same year, the fine increases to \$50 - \$65 if not paid within 15 days. Failure to pay will result in a court appearance.

Parkway Trees

The City recognizes that trees beautify and lend value to our homes, neighborhoods, parks and business areas. At the same time, trees conserve energy, help clean the air, protect rivers and streams, and provide a habitat for wildlife. The city offers a variety of programs to encourage tree planting in the community.

New Parkway Tree 50/50 Cost-Share Program

The city offers a 50/50 cost-share program to residents who wish to have a new tree planted in their parkway where none existed previously. Residents may call the Department of Public Works at (630) 420-6095 and request to be included in the next planting program.

Replacement Parkway Tree Program

If a parkway tree appears diseased, contact the Department of Public Works Forestry Division as soon as possible at 630-420-6095. A forester will examine the tree and advise steps should be taken to care for the tree. The city does not spray pesticides on parkway trees. If a parkway tree dies, the city will remove it, grind out the stump and plant a replacement tree at no charge. If the tree is a diseased elm, the city will prune or remove the tree to prevent spreading the disease.

New Construction Tree Program

The city requires developers to plant parkway trees in all new residential subdivisions. For more information on the requirements of this program, developers or homeowners should contact the Public Works Forestry at 630-420-6095.

Only city-approved trees may be planted in parkways. A permit is required before planting, however there is no charge for it. A permit application, list of approved trees, and instructions may be picked up at the Department of Public Works, 414 E. 5th Ave. or call 630-420-6095. These guidelines help to ensure that appropriate and healthy trees are planted, and prevent future traffic visibility problems. Prior to planting, residents must call JULIE for underground utility locations.

VACATION WATCH

When planning your vacation, don't forget to protect your home while you are away. The Naperville Police Department provides helpful keep your home safe and secure. Residents may also request a "Vacation Watch" before leaving home for an extended period of time. By registering your home with the Naperville Police Department, officers will provide extra patrols of your residence while you are away. Notifying us also provides us with a way to contact you if we receive a call about a problem at your home.

To register your home, simply print out the form found at www.naperville.il.us under Public Safety, Police Services, Prevention and Education and Vacation Watch and return it the Naperville Police Department no less than days prior to your departure. Return to:

Naperville Police Department
Attn: Records Section
1350 Aurora Avenue Naperville, IL 60540

VACATION SAFETY TIPS

Your vacation should be a pleasant experience for you and your family. Take a few simple steps to reduce the possibility of becoming a victim of a burglary or other criminal acts against your home. The time spent preparing your home for vacation could save you money later. Before you leave for your trip:



- Notify local police of the departure and return dates of your trip and provide the name and telephone number of a neighbor or relative to notify in the event of an emergency.
- Place a "vacation hold" on newspaper subscriptions, mail delivery and include the start and ending dates.
- Ask a neighbor to pick up newspapers and mail if the "vacation hold" was not followed. Ask them to remove throwaway papers and circulars from the doorway and mailbox.
- Place interior lights and a radio on timers to give the appearance that the home is occupied.
- Have front exterior lights on photocells that activate in the evening and shut off at daybreak.
- Notify neighbors of your absence and encourage them to contact the police regarding any suspicious activity at your home.
- Arrange to have the grass cut and watered, leaves raked and the sidewalk and driveway shoveled during the winter.
- Remove all tools, lawn implements, garbage cans and yard furniture to the garage, basement or shed.
- Unplug all non-essential electrical appliances such as computers, fans, televisions, irons, washer and dryers to avoid damage from electrical storms.
- Be sure the sump pump is functioning properly and free from debris to avoid basement flooding.
- Set the home thermostat at a reasonable temperature: 85° in the summer & 50° in the winter.
- Make sure entry points into the home are secure.
- Close the fireplace flue to prevent birds and animals from entering.
- If you have an alarm system, leave a current list of contacts with the alarm company in case of system activations. False alarms may be fined.
- Disconnect the electric garage door opener and lock the garage door.
- Be sure all vehicles left at home are locked and remove all valuables.

HOME AND CAR BURGLARY PREVENTION

When the weather turns warm, home and car burglaries tend to increase. Burglary is a crime of opportunity. Most thieves look for an easy target. The majority of all thefts in Naperville happen when people leave doors or windows unlocked. Don't become a victim! Make it difficult for a thief to target you by following these simple theft prevention tips:

Keep an eye on an open garage. Each month patrol units and volunteers report hundreds of open unattended garages. It only takes a moment for criminals to remove valuable items such as golf clubs, bicycles, alcohol and tools. Worse yet, a thief could enter your unlocked home or steal your car. Always close your garage door unless it is within immediate sight.

Lock and secure all doors. Make sure you have deadbolts on all doors leading to your home. To secure sliding glass doors, install a bar or special lock.

Secure your vehicle. Always roll up the windows and lock your car, even when it is parked in the garage or driveway. Never leave keys or valuables, such as cell phones, computers, purses or money in plain view. Remember, if a criminal breaks into your vehicle and steals your garage door open or house keys, he now has easy access to your home.

Leave on the light. It only costs "a nickel a night" to leave on your front and back outside lights. Well-lit areas deter criminals from taking

advantage of the cover of darkness.

Be aware, alert and active. There cannot be a law enforcement officer on every corner in Naperville, so citizen participation is essential to combat crime. Always report suspicious or unusual activity to the police. Get your neighbors together to start a Neighborhood Watch Program.

For more information on crime prevention programs such as Neighborhood Watch, National Night Out, Community Radio Watch or for a free home security survey, contact the Community Education/Crime Prevention Unit at 630 305-5477.

Marita Manning is our very own Crime Prevention Specialist with the Naperville Police Department. She is happy to answer questions or offer a free home security survey. You can reach Marita at 630-420-6725.

CURFEW

For residents under age 17, curfew is 11 p.m., Sunday through Thursday and midnight Friday and Saturday, except when accompanied by a responsible adult. Curfew ends at 6 a.m. Parents keep an eye on the time.

VANDALISM

Minors caught in acts of vandalism are required to join the police-social worker program and pay restitution. If youths do not comply, parent or legal guardian will be held liable. Parents are also responsible for underage drinking parties in their home.

SUMMER EVENTS IN NAPERVILLE

Thursdays June 10 - August 12

Municipal Band Concerts

The Naperville Municipal Band's annual free summer concert series features a variety of themes for every musical taste. Concerts take place on Thursday evenings at 7:45 p.m. beginning June 10, and running through August 12. Residents are encouraged to bring their lawn chairs or blanket and join the band at the Community Concert Center in Central Park. For more information call: 961-0908



Tuesday's June 15 to August 31

Carillon Summer Recital Series

Carillonneurs from around the world will perform each Tuesday evening at 7:30 p.m. from June 15, to August 31. Performances last approximately one hour and are held rain or shine except when lightning. The Millennium Carillon is located at the foot of Rotary Hill. Parking is available across Aurora Avenue at Naperville Central High School. Rotary Hill, Downtown Naperville 428-4239

Saturday and Sunday, July 17 & 18

NAPERVILLE WOMAN'S CLUB ART FAIR

This annual juried event boasts quality pieces you'll want to treasure 10 a.m.-5 p.m. both days. Free admission. For information on exhibiting at this show, call the Naperville Woman's Club at 630.820.8466.



Saturday and Sunday, July 24 & 25

DEMON RUM

Join the women of the Village as they march for Temperance. Sign the pledge and attend the rally on the steps of the Martin Mitchell Mansion at 2:30 p.m.

July 31-August 1 and August 7 & 8

SUMMER FLOWERS

View Naper Settlement's gardens at the height of the flowering season. Take home a start on an heirloom plant and make a paper flower to remind yourself of the one's you've seen on our grounds. Meet on the porch of the Paw Paw Post Office at 2:30 p.m.

Century Farms - Our Neighborhood News Summer 2004

July 30 - August 1

THE SIZZLIN' SUMMER CRAFT FAIR

This fair will be held July 30-August 1. Nearly 150 crafters will line the streets of downtown Naperville with handmade craft items. Hours are from 9 a.m.-6 p.m. Friday and Saturday and from 11 a.m.-4 p.m. on Sunday. Naperville Downtown 544-3372 Sponsored by Downtown Naperville Alliance

August 3

NATIONAL NIGHT OUT 2004 -On Tuesday August 3, neighborhoods throughout Naperville are invited to take part in the city's ninth annual National Night Out. To get involved in this year's event, plan an event with your homeowners association and register your event with Marita Manning by July 15. City of Naperville. Throughout the city -420-6725

Saturday and Sunday, August 14 & 15

MOTHER MAY I? CHILD'S PLAY

Explore the life of children in times past - life in the 1800s wasn't all work! Stilt walking, hoop rolling, marbles and hopscotch are fun for children of all ages. Try your hand at white washing the fence, Tom Sawyer style or cool off in the History Connection with hands-on activities.

Saturday and Sunday, August 21 & 22 and August 28 & 29

GAMES PEOPLE PLAY

Relax and have fun! Play historic town ball, start a croquet match at the Martin Mitchell Mansion or enjoy parlor games. If you want a quieter activity, join a checkers match by the Firehouse, or Parcheesi in the shade of the Green. Town ball starts at 11:30 a.m. and 2:30 p.m. on Saturday and on Sunday at 2:30 p.m.

Saturday and Sunday, September 4 & 5

LAST FLING ANTIQUE AUTO & CRAFT SHOW

Antique auto show on Sunday the 5th only. Free weekend admission thanks to the Naperville Jaycees.

Saturday and Sunday, September 11 & 12

MS FAMILY CRAFT & ARTS FAIR

Arts and crafts show with juried exhibitors offering authentic handcrafted items for everyone. Saturday 10 a.m.-5 p.m., Sunday 11 a.m.-4 p.m. Admission \$3, children under 12 free. If you are interested in participating in the art fair, please contact MS Festival of Arts at 312.409.8524 for more information.

Friday, Saturday and Sunday, September 17, 18, & 19

OLD-FASHIONED CIRCUS

Big top fun comes to the Settlement grounds. Friday the 17th, see the elephant-powered tent raising at 9 a.m. (free). Family Fun Night - Friday Sept. 17th - Buffet dinner, clowning around, games, crafts and a special circus performance all under the Big Top. Limited tickets available. Public performances, Saturday the 18th at 11 a.m., 2 & 5 p.m., Sunday the 19th at 2 & 4:30 p.m. For tickets, call 630.305.5555 after July 1. Thank you to our sponsor: The First National Bank of Naperville.

CIRCUS



Saturday and Sunday, September 25 & 26

NAPERVILLE WINE FESTIVAL

This popular event returns! Features 10 wine tastings with music, souvenir glass, food and wine seminars, and cooking demonstrations! See www.inplayevents.com/winefest/festival.htm to order tickets and for more information.



GET ANTI-AGING

"UNDER CONTROL"

BEFORE THE DAMAGE IS DONE

before sun

ARBONNE PRODUCTS
SUPPORT HEALTHY SKIN...

WITH BEFORE SUN AND RE⁹

Let's face it: Skin is often the first place to show your age. That's why a technologically-advanced skin care regimen is your first line of defense against the ravages of time, free radicals, stress and environmental factors like sun exposure. Arbonne's anti-aging formulas include sun care products that support skin "before" the damage is done and NutriMinC RE⁹ products that address the "after" effects also. Use of the NutriMinC RE⁹ line of products simultaneously with the "before" sun products, every day, works to REduce and pREvent the visible signs of aging in all skin types.

ARBONNE
INTERNATIONAL

Basant Khanna

Area Manager
Independent Consultant, ID# 10438269
(630) 544-1117
776 Sigmund Road
Naperville, IL 60563

FREE sun tote with any before sun complete system purchase. Call for a catalog or consultation.

National Night Out

Police - Community Partnerships



National Night Out 2004
Tuesday, August 3
6:30 p.m. to 8:30 p.m.
Century Farms Park



Join Us!

On Tuesday, August 3, neighborhoods throughout Naperville are invited to take part in the city's ninth annual National Night Out.



Join us for an ice cream social block party at the Century Farms Neighborhood Park. As this event is registered with the City of Naperville, various city departments or groups will visit us including:

City Council
Community Radio Watch
Electric Department
Fire Department

Friendly Streets Program
Police Department
Police Explores
Public Works (snow plows!)

Several of the above departments come with wonderful surprises for the younger neighbors in mind. This is surely an event you won't want to miss and one worth them staying up a little past their bed time.

From **6 PM to 9PM** on August 3rd, neighbors are asked to turn on their outside lights, lock their doors, and spend the evening outside with the neighbors and police.

National Night Out is a nationwide crime prevention event designed to 1) generate support and participation in local anti-crime efforts, and 2) strengthen neighborhood spirit and police-community relations.



In order to plan accordingly for this event we would like to get an idea of how many people will be coming and would like ice cream.

Please complete the form below and place in the box marked National Night Out, located at: 1608 Mohler Court. If you have any questions regarding this event, don't hesitate to call Fran Bixler at 357-5642 or email her at fran@prime-realty.net.

Family Name _____

House Address _____

Number of Ice Cream Eaters _____ .50 cents for every ice cream please = \$ _____



JM Painting
and Design Services

"Protecting Your Investment"

When *QUALITY, SERVICE,*
and *AFFORDABILITY* matter!

- Interior/Exterior Painting • Cathedral Ceilings
- Faux/Decorative Finishes • Wallpaper Removal
- Cedar & Aluminum Siding • Power Washing
- Drywall Installation/Repair • Decks

Call now for your **FREE** estimate

(630) 544-7550
jmpaintingdesign@aol.com



**DON'T FORGET TO ASK ABOUT
OUR MONTHLY SPECIALS!!**

Over 15 Years of Experience * Fully Insured
Professional & Reliable Service * Guaranteed Work

Simple pleasures

Summer Sale July 31-Aug.14
Fall Harvestfest Sept.18
Fresh shipments all season!



The Growing Place

Naperville... on Plank Rd, 5 blks W of Naper Blvd... 630/355-4000
Aurora... on Montgomery Rd, 2 blks N of Ogden... 630/620-8088



Steve Piper & Sons
TREE SERVICE
(630) 898-6050

HARDWOOD MULCH

- Improves moisture retention • Increases soil fertility
- Helps reduce weed growth • Mulch installation available

Double Processed: \$8.00 per cubic yard
Triple Processed: \$11.75 per cubic yard
(Plus Delivery Charge)

Now Offering NEW TREE INSTALLATION

Save Time! Save Money! Be Happy!

with
SPRING-GREEN®

- Your Local Choice Since 1977
- Friendly, Caring Service
- Special Neighborhood Pricing




- Fertilization & Weed Control
- Core Cultivation (Aeration)
- Insect & Disease Control
- Tree & Shrub Care



800-830-5914

Century Farms
SPECIAL PRICE
\$32.95 per Visit
Of Fertilization &
Weed Control

Promotional Code: HN04

Century Farms
SPECIAL PRICE
\$65.00
For Core Cultivation
(Aeration)

Promotional Code: HN04

Century Farms
SPECIAL PRICE
\$36.00 per Visit
Of Basic Tree &
Shrub Care

Promotional Code: HN04

Century Farms
SPECIAL PRICE
\$25.00 OFF
Of Perimeter Pest
Control Program

Promotional Code: HN04

Experience the Gentle Power of Massage
Vickie L. St. Germain, NCTMB



THERAPIES AVAILABLE:

- ◆ Swedish/Relaxation
- ◆ Deep Tissue/Therapeutic
- ◆ Hot Stone Massage
- ◆ Pre-natal Massage
- ◆ Myofascial Release

RECEIVE \$10 OFF FIRST VISIT
GIFT CERTIFICATES AVAILABLE

By appointment only 815-715-1834
Located 3 mi. North of Downtown Plainfield

UNITED HEALTH CARE ALTERNATIVE CARE
Approved Provider ** Members SAVE 20%**

Graduate of Wellness & Massage Training Institute
National Board Certified in Therapeutic Massage & Bodywork
A.M.T.A. Professional member
Plainfield Area Chamber of Commerce member
Home Based business

YOGA FOR SPECIAL KIDS

Nancy Lupo

Certified Special Needs Yoga Instructor

(630) 820-1799

at The Balance Place
710 E. Ogden Ave. Suite #200
Naperville, IL 60563



A Warning To All Wrist Pain Sufferers...

“Carpal Tunnel?”

Naperville, IL – A recently released free report reveals a leading cause of wrist pain, numbness or weakness may not be caused by problems in the wrists and is overlooked by many doctors when they diagnose and treat carpal tunnel symptoms. If you are currently seeing a doctor for wrist pain, numbness, or weakness, a free report is now available that reveals what your doctor may not know. To order your copy of this free report, call toll-free **1-800-953-6813**. (24 hr. recorded message)

Yours Redesigned

**Interior Redesign
&
Real Estate Staging Services**

"Your Furnishings...Our Talents...In One Day"

Dissatisfied with your rooms?

Our Interior Redesign services are the economical answer.

Can't pick a color?

We can Color Consult for paint or wallpaper.

Selling your home?

Our Home Staging service will make your home stand out from the rest.

Receive a *Free Gift plus \$25.00*

off your first redesign.

Schedule your consultation today!

Grace Ann Simoni

Interior Redesign Industry Specialist

www.yoursredesigned.com

graceann@yoursredesigned.com

630-355-0318



BUSHES & TREE TRIMMING

- * REASONABLE RATES
- * SAME or NEXT DAY SERVICE
- * 20 YEARS of EXPERIENCE

963-3922

Tom Herold - Owner

MENTION " CENTURY FARMS " NEWSLETTER FOR FREE ESTIMATE



J & J Painting

of Naperville, Inc.

Call now to schedule your exterior painting estimate

- ◆ Interior painting
- ◆ Only top of the line products used
- ◆ Fully Insured
- ◆ References available - *"Past jobs speak for themselves"*
- ◆ Group rates



"NO ONE will beat our job quality!"



Call For A Free Estimate

630-851-0106

OUR NEIGHBORHOOD NEWS IS PUBLISHED QUARTERLY

For information on editorial submissions and deadlines contact:

Editor: Fran Bixler

PH: 357-5642 fran@prime-realty.net

For information on advertising rates & deadlines contact:

Publisher: Nancy Higdon

Higdon & Associates Marketing
PH: 927-1337 Nhigdon@comcast.net

24-Hour Emergency Service

Add Style to Your Home

At Expert Plumbing, we offer products from manufacturers such as Grohe, Kohler, Moen, Zoeller and many more!

Call us today about in-home shopping.



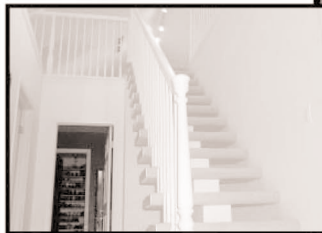
"Expert Plumbing, We Never Close!"

630-579-1996

www.expertplumbing.tv

CUSTOM BASEMENTS/BATHS/ATTICS

Let Summit Construction help you transform that unused space into a living area that the whole family can enjoy.



**FREE
ESTIMATE**

SUMMIT
CONSTRUCTION, INC.

1612 Ogden Avenue, Lisle, IL 60532
630-276-8665

LOOKING FOR A NEW DECK!

Get a **FREE ESTIMATE NOW** for early installation.

Certa ProPainters®



Painting with
certainty.

Residential. Interior. Exterior.

CEDAR HOME SPECIALIST

630-355-9400

www.certapro.com

Call today for a complimentary estimate.

©1995-2003 by Certa ProPainters Ltd., Oaks, PA. Each franchise independently owned and operated.
Certa ProPainters & Design® are registered trademarks of Certa ProPainters Ltd.

Dance Classes for Ages 2 - Adult

DancEncounter School of Dance

Ballet, Jazz, Tap, Modern, Hip-Hop, Yoga, Musical Theater,
Tae Kwon Do, Character, Fitness, Etc.

"The Home of Dance"

SERVING THE FOX VALLEY AREA SINCE 1992

www.dancencounter.com

Dancencounter@aol.com



North Aurora
728 Butterfield Road

Route 56,
West of Kirk Road

(630) 264-1221

DancEncounter School of Dance

!!!50% OFF!!!

Registration Fee (with Class Sign-Up)

With this Coupon. Not valid with other offers. Zero monetary value.

Also at
Geneva • 630 E. State St.
(630) 232-1221
**** New Irish and Ballroom
lessons being offered ****

Q If you've got the **questions,**
we've got the answers.

- Will you outlive your retirement savings?
- Are your investments appropriate for your risk tolerance and timeframe?
- Would your family suffer financially if you or your spouse became disabled?
- If you or your spouse died unexpectedly, could your family maintain its current standard of living?
- Who will get your estate, your heirs or the government?
- What is the best way to save for college?



Carol L. Anderson

**We help clients build a solid financial plan.
Call for a complimentary appointment.**

630-205-5355 or 773-380-8551
www.carollanderson.com

Lincoln
Financial Advisors®
A member of Lincoln Financial Group

Lincoln Financial Advisors Corp.
8755 W. Higgins Rd., 5th Floor
Chicago, IL 60631-2708

Securities and investment advisory services offered through Lincoln Financial Advisors Corp., a broker/dealer (member SIPC) and a registered investment advisor. Insurance offered through Lincoln affiliates and other fine companies. Lincoln Financial Group is the marketing name for Lincoln National Corporation and its affiliates. CRN0204-2761

**LEARNING
IS FUN
NURSERY SCHOOL**

*A LOVING PLACE
FOR YOUR CHILD*



**1313 North Mill Street
Phone 357-4836**

**3-6 years
2, 3, 5 half-days**

**Privately owned and operated
in Naperville since 1974**

Extraordinary staff longevity

childexcel.com

**PAINTING
SPECIAL**

Whole Interior
UP to 8 Rooms
\$1799 + materials

ALSO AVAILABLE

- **Exterior Painting**
- **Deck Staining**
- **Fence Staining**
- **Drywall Repairs**

All-Pro
Home Improvement
& **Painting, Inc.**

(630) 742-8351
(630) 742-8353

**ALSO
AVAILABLE**

- **Bathroom Updates**
- **Ceramic Tile**
- **Chair Rails**

**BASEMENT
SPECIAL**

Refinish Basement
Materials Included
\$12,000



CALL TODAY • FREE ESTIMATES • PROFESSIONAL WORK • INSURED AND BONDED



Asking Price

\$659,900.00

1019 Erb Farm Court

JUST SOLD!

ANOTHER

CENTURY FARM HOME

Patty Gustin
Associate Broker,

Prudential Old English
(630)220-0548 Cellular
(630)548-0610

Private Fax

Email: pgustin239@msn.com



VIEW ENTIRE MLS AT WWW.PATTYGUSTIN.COM



What can a pair of 20 pound dumbbells do for you?

A TAILORED PROGRAM FOR A FIT BODY!

Free Consultation for New Clients



Personal Training
in your Home, Office, Gym
or in my Gym

Customized and Goal Oriented
For Your Individual Needs

Body Composition and Fat Analysis

Mary Golda
Certified Personal Trainer
630-747-5537
hghmary2003@yahoo.com

Training Women and Men in the Greater Chicagoland Area and Suburbs

SOLD



Century Farms Homeowners!
4.5% total commission on
listing agreements signed by August 31, 2004.

Includes:
Virtual Tour on Internet
Home Seller/Buyer Warranty
First Class Marketing and Promotion

Century Farms Market Statistics

Active Listings	List Price	Status	Contract Date	Model	Approx Sq Ft*
1516 William Penn Drive	\$519,000	Contingent	06/18/2004	Foxridge	2,867
764 Century Farm Lane	\$589,900	Contingent	05/15/2004	Gemstone	3,336
1511 Hammer Creek Court	\$594,900	Contingent	06/01/2004	Fieldstone	3,023
1615 Pennsylvania Court	\$615,000	Contingent	05/25/2004	Winsford	3,668
924 Century Farm Road	\$629,900	Contingent	05/22/2004	Fieldstone	3,141
1512 Hammer Creek Court	\$649,900	Contingent	05/04/2004	Regency	4,026
1608 Pennsylvania Court	\$650,000	Active		Ultima	3,200

Closed Listings	List Price	Sales Price	Closed Date	Model	Approx Sq Ft*
707 Century Farm Lane	\$409,900	\$412,800	06/19/2003	Madison	2,424
707 Conestoga Road	\$419,900	\$415,000	08/29/2003	Madison	2,385
640 Century Farm Lane	not avail.	\$423,500	04/23/2004	Foxridge	2,712
740 Sigmund Road	\$499,900	\$478,500	07/25/2003	Hearthstone	2,973
620 Conestoga Road	\$499,900	\$492,000	12/05/2003	Brookfield	3,114
1511 Hammer Creek Court	\$545,000	\$535,000	10/03/2003	Fieldstone	3,023
939 Erb Farm Road	\$549,900	\$545,000	09/12/2003	Fieldstone	2,914
1607 Pennsylvania Court	\$549,900	\$530,000	12/09/2003	Winsford	3,487
732 Century Farm Lane	\$549,900	\$542,500	10/27/2003	Wexford	3,364
944 Erb Farm Lane	\$549,900	\$521,925	03/15/2004	Brookstone	3,565
611 Century Farm Lane	\$598,000	\$582,000	04/26/2004	Wexford	3,312
651 Conestoga Road	\$599,900	\$572,500	08/29/2003	Winsford-E	3,477
787 Sigmund Drive	\$600,000	\$600,000	06/28/2004	Gemstone	3,656
1503 Hammer Creek Court	\$629,900	\$620,000	06/11/2004	Brookstone	3,649
791 Sigmund Road	\$625,000	\$633,080	06/18/2004	Winsford	3,668
1019 Erb Farm Court	\$659,900	\$636,000	06/18/2004	Ultima	3,322

This information is deemed reliable but no warranty, expressed or implied is made as to the accuracy of the information contained herein, and the same is submitted to errors and omissions. This list represents the last 12 months of market data. Above information was obtained from the Multiple Listing Service of Northern Illinois (MLSNI), Naperville Township and DuPage County Recorder's Office. The above properties have been listed/sold through cooperating brokers associated with MLSNI. Status as reported by listing agent as of 07/06/04. The Bixler Group supplied the model name when that information was not originally provided.

If you are thinking of listing or buying, call your "Century Farms Specialist"

Fran Bixler Broker, ABR, Realtor®

Century Farms Resident since 1999

Naperville Resident since 1976 ~ Licensed Realtor® since 1994

Direct: (630) 357-5642 Cell: (630) 544-4600

E-mail: fran@thebixlergroup.net

Prime Realty Network, Inc. 184 Shuman Blvd., Suite 200 Naperville, IL 60563



Discount medicines Safety 24/7 Service Family
Savings Discount Dining
Peace of mind Convenience Free Club Magazine
Travel Hotels Great Discounts



You'll Be Amazed At All We Do!
Travel, Insurance and Road Assistance

Discount Insurance 5 Free Tows
Roadside Assistance Free towing
Save Money on Gasoline Credit Card
Local Offices Trip Planning
Battery Service **Shopping**
Car Rental Airfare

Save \$10
NO
Enrollment Fee
Mention code
HO1A

Click: aaa.com

Call: 1-866-Your-AAA

Visit: a store in your neighborhood

TIME VALUE MAIL DO NOT DELAY

Kids who
AUDITIONING
Love
to Sing!



630.369.9679
Call mornings for more information or to schedule an appointment, or e-mail auditions@youngnapervillesingers.org

Young Naperville Singers
"Lose Yourself in Singing; Find Yourself in a Song!"

Auditioning Boys and Girls in grades 4-12 who like to sing! Wednesday, August 11, 2004



The Carpet Guy

Specializing in
carpet area rugs & upholstery cleaning
home & office cleaning,
building maintenance,
fire & flood restoration,
move-in/move-out cleaning,
construction cleanups, and
handyman services!



We welcome regular cleaning contracts and ongoing cleaning services. Please call us now to ask about our specials for your cleaning needs at **866-467-8336**.